

DBC Series Commercial High Pressure Triplex Pump

 MANIFOLD Brass forged.	 PLUNGER Solid stainless steel, ceramic coating, precision grinded.	 UNLOADER (#7) Bolt on, internal bypass, trap type, built with detergent injector, pressure adjustable.
 CRANKCASE Die-cast aluminum alloy, anodized.	 PACKING SEALS Germany Parker, U type, Duplex packing.	 OUTLET INLET
 CONNECTING ROD One piece aluminum alloy, Zinc alloy for option.	 CRANKSHAFT Forged steel alloy, heat treatment, multiple process grinded.	
 BEARING Ball and needle bearing.	 LUBRICATION Splash type, oil type 15W-40, SAE30.	INLET: 3/4" BSP or NH, Female OUTLET: 3/8" Quick Connect

A VERSION Engine Direct Drive

6.5-7HP HOLLOW SHAFT 3/4in 19.05mm **KEY** 4.78mm



PUMP MODEL	MAX FLOW		MAX PRESSURE		ENGINE POWER		WEIGHT	SHIPPING SIZE
	gpm	lpm	psi	bar	rpm	hp		
DBC-13093A	3.3	12.6	3000	206	3400	7.0	7	30x26x23.5
DBC-1506A	2.9	10.8	3000	206	3400	6.5	8	30x26x23.5
DBC-15065A	3.1	11.7	3000	206	3400	6.5	8	30x26x23.5
DBC-1507A	3.3	12.6	3000	206	3400	7.0	8	30x26x23.5

A5 VERSION Engine Direct Drive

9-13HP HOLLOW SHAFT 1in 25.4mm **KEY** 6.35mm



PUMP MODEL	MAX FLOW		MAX PRESSURE		ENGINE POWER		WEIGHT	SHIPPING SIZE
	gpm	lpm	psi	bar	rpm	hp		
DBC-1507A5	3.3	12.6	3600	248	3400	13	8.3	32.5x30.5x24
DBC-15085A5	4.0	15.3	3000	206	3400	9	8.3	32.5x30.5x24
DBC-1510A5	4.8	18	3600	248	3400	13	8.3	32.5x30.5x24
DBC-1512A5	5.7	21.6	3200	220	3400	13	8.3	32.5x30.5x24

B VERSION Solid Male Shaft

5.5Kw Max MALE SHAFT 24 x 30mm **KEY** 8.0mm



PUMP MODEL	MAX FLOW		MAX PRESSURE		MOTOR POWER		WEIGHT	SHIPPING SIZE
	gpm	lpm	psi	bar	rpm	kw		
DBC-1507B	2.7	10.4	2700	186	2800	4.0	7.7	30x26x23.5
DBC-15085B	3.3	12.6	3000	206	2800	5.5	7.7	30x26x23.5
DBC-1510B	3.9	14.8	2700	186	2800	5.5	7.7	30x26x23.5
DBC-1512B	2.4	9.2	3200	220	1450	4.0	7.7	30x26x23.5
DBC-1514B	2.8	10.7	3400	235	1450	5.0	7.7	30x26x23.5

DBC Series Commercial High Pressure Triplex Pump

C/2/3 VERSION Motor Direct Drive

7.5Kw Max HOLLOW SHAFT 24mm 28mm **KEY** 8.0mm



PUMP MODEL	MAX FLOW		MAX PRESSURE		MOTOR POWER		WEIGHT	SHIPPING SIZE
	gpm	lpm	psi	bar	rpm	kw		
DBC-13093C2	2.8	10.8	2700	186	2900	4.0	8	32.5x30.5x24
DBC-1507C2	2.8	10.8	2700	186	2900	4.0	8	32.5x30.5x24
DBC-15085C3	3.5	13.1	3000	206	2900	5.5	8	32.5x30.5x24
DBC-1510C3	4.1	15.4	3600	248	2900	7.5	8	32.5x30.5x24
DBC-1512C2	2.4	9.2	2900	220	1450	4.0	8	32.5x30.5x24
DBC-1514C3	2.8	10.8	3400	235	1450	5.5	8	32.5x30.5x24

C4/5 VERSION NEMA Motor Direct Drive

NEMA2-7.5HP HOLLOWSHAFT 5/8in KEY1.98" 11/8in KEY0.25"



PUMP MODEL	MAX FLOW		MAX PRESSURE		MOTOR POWER		WEIGHT	SHIPPING SIZE
	gpm	lpm	psi	bar	rpm	hp		
DBC-15045C5	2	7.6	1500	105	3400	2.0	8	32.5x30.5x24
DBC-15085C5	2.2	8.3	1500	105	1750	2.0	8	32.5x30.5x24
DBC-1512C4	3	11.3	2500	172	1750	5.0	8	32.5x30.5x24
DBC-1514C4	3.45	13	2300	158	1750	5.0	8	32.5x30.5x24
DBC-1514C4	3.45	13	3000	205	1750	7.5	8	32.5x30.5x24


G1 VERSION Gearbox, Engine Direct Drive

6.5-7HP HOLLOW SHAFT 3/4in 19.05mm **KEY** 4.78mm



PUMP MODEL	MAX FLOW		MAX PRESSURE		ENGINE POWER		WEIGHT	SHIPPING SIZE
	gpm	lpm	psi	bar	rpm	hp		
DBC-1510GA	2.2	8.3	3200	220	3400-1560	6.5	9.6	43x41x26
DBC-1512GA	2.6	9.9	3200	220	3400-1560	6.5	9.6	43x41x26
DBC-1514GA	3.15	11.9	3000	206	3400-1560	6.5	9.6	43x41x26

Flange Bolt Circle



A1 Flange
Fit for engine 6.5-7HP

A5 Flange
Fit for engine 9-15HP

C1 Flange
B34 Frame No.90

C2 Flange
B34 Frame No.100/112

C5 Flange
Fit for 56C/56HC

DBD Series Commercial High Pressure Triplex Pump



MANIFOLD

Brass forged.



CRANKCASE

Die-cast aluminum alloy, anodized.



CONNECTING ROD

One piece aluminum alloy, Zinc alloy for option.



BEARING

Ball and needle bearing.



PLUNGER

Solid stainless steel, ceramic coating, precision grinded.



PACKING SEALS

Germany Parker, U type, Duplex packing.



CRANKSHAFT

Forged steel alloy, heat treatment, multiple process grinded.



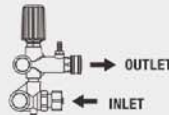
LUBRICATION

Splash type, oil type 15W-40, SAE30.



UNLOADER (#7)

Bolt on, internal bypass, trap type, built with detergent injector, pressure adjustable.



INLET: 3/4" BSP or NH, Female

OUTLET: 3/8" Quick Connect

A5 VERSION

Engine Direct Drive



13HP HOLLOW SHAFT

1in 25.4mm KEY 6.35mm

PUMP MODEL	MAX FLOW		MAX PRESSURE		ENGINE POWER		WEIGHT	SHIPPING SIZE
	gpm	lpm	psi	bar	rpm	hp		
DBD-1807A5	4.8	18.2	3600	248	3400	13	9.6	32.5x30.5x24
DBD-1809A5	6.2	23.4	3000	206	3400	13	9.8	32.5x30.5x24
DBD-1810A5	6.9	26	2700	186	3400	13	9.6	32.5x30.5x24

B VERSION

Solid Male Shaft



7.5Kw Max MALE SHAFT

24 x 43mm KEY 8.0mm

PUMP MODEL	MAX FLOW		MAX PRESSURE		MOTOR POWER		WEIGHT	SHIPPING SIZE
	gpm	lpm	psi	bar	rpm	kw		
DBD-1807B	3.95	14.96	2700	186	2800	5.5	9.5	32.5x30.5x24
DBD-1809B	5.08	19.24	2700	186	2800	7.5	9.5	32.5x30.5x24
DBD-1810B	2.92	11.07	3600	248	1450	5.5	9.5	32.5x30.5x24
DBD-1812B	3.51	13.26	3000	206	1450	5.5	9.5	32.5x30.5x24
DBD-1814B	4.09	15.5	3600	248	1450	7.5	9.5	32.5x30.5x24

G2/3 VERSION

Motor Direct Drive



7.5Kw Max HOLLOW SHAFT

28 mm KEY 8.0mm

PUMP MODEL	MAX FLOW		MAX PRESSURE		MOTOR POWER		WEIGHT	SHIPPING SIZE
	gpm	lpm	psi	bar	rpm	kw		
DBD-1807C3	4.09	15.5	3600	248	2900	7.5	10	32.5x30.5x24
DBD-1809C3	5.26	19.92	2700	186	2900	7.5	10	32.5x30.5x24
DBD-1810C3	2.92	11.07	3600	248	1450	5.5	10	32.5x30.5x24
DBD-1812C3	3.51	13.28	3000	206	1450	5.5	10	32.5x30.5x24
DBD-1814C3	4.09	15.5	3600	248	1450	7.5	10	32.5x30.5x24

DBD Series Commercial High Pressure Triplex Pump

C4 VERSION

NEMA Motor Direct Drive



NEMA5-7.5HP HOLLOWSHAFT

1.125in 1.125" KEY 0.25"

PUMP MODEL	MAX FLOW		MAX PRESSURE		MOTOR POWER		WEIGHT	SHIPPING SIZE
	gpm	lpm	psi	bar	rpm	hp		
DBD-1809C4	3.5	13.2	2000	138	1750	5	10	32.5x30.5x24
DBD-1810C4	3.5	13.2	3000	206	1750	7.5	10	32.5x30.5x24
DBD-1812C4	4.25	16	2500	172	1750	7.5	10	32.5x30.5x24

G2 VERSION

Gearbox, Engine Direct Drive



11-13HP HOLLOW SHAFT

1in 25.4mm KEY 6.35mm

PUMP MODEL	MAX FLOW		MAX PRESSURE		ENGINE POWER		WEIGHT	SHIPPING SIZE
	gpm	lpm	psi	bar	rpm	hp		
DBD-1812G2	3.8	14.3	3600	248	3400-1560	11	12.9	43x41x26
DBD-1814G2	4.4	16.7	3600	248	3400-1560	13	12.9	43x41x26

H VERSION

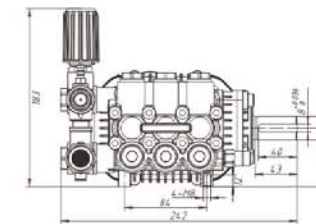
Hydraulic Motor Drive



HYDRAULIC MOTOR SPECIFICATION
 Housing: High strength aluminum alloy
 Nominal Displacement: 20ml/r
 Rated pressure: 160bar/2320psi
 Rated speed: 2000rpm
 Output torque: 40.3 N.m
 Connection Port: M22x1.5 Female

PUMP MODEL	MAX FLOW		MAX PRESSURE		HYDRAULIC MOTOR		WEIGHT	SHIPPING SIZE		
	gpm	lpm	psi	bar	gpm	lpm			psi	bar
DBD-1807H	2	7.6	3000	206	5.4	20.5	2350	175	13.6	43x41x26
DBD-1810H	3	11.3	3000	206	6.5	24.6	2550	175	13.6	43x41x26
DBD-1814H	4	15.1	3000	206	7.7	29	2550	175	13.6	43x41x26

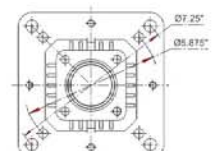
B Version Shaft Size



Flange Bolt Circle



C3 Flange
B34 Frame No.132



C4 Flange
Fit for 142TC/145TC, 182TC/184TC

DBQ Series Commercial High Pressure Triplex Pump



MANIFOLD

Brass forged.



CRANKCASE

Die-cast aluminum alloy, anodized.



CONNECTING ROD

One piece aluminum forged, Zinc alloy for option.



BEARING

Dual needle bearing.



PLUNGER

Solid stainless steel, ceramic coating, precision grinded.



PACKING SEALS

Germany Parker, U and V type, Duplex packing.



CRANKSHAFT

Forged steel alloy, heat treatment, multiple process grinded.



LUBRICATION

Splash type, oil type 15W-40, SAE30.



UNLOADER (#1)

For flow less than 20lpm/5.28gpm
INLET: 3/4" BSP or NH
OUTLET: 3/8" QD



UNLOADER (#4)

For flow great then 20lpm/5.28gpm
INLET: 3/8" Female
OUTLET: 3/8" Female
BYPASS: 3/8" Female

A VERSION

Engine Direct Drive

6.5-7HP **HOLLOW SHAFT** **3/4in** **KEY**
19.05mm 4.78mm



PUMP MODEL	MAX FLOW		MAX PRESSURE		ENGINE POWER		WEIGHT	SHIPPING SIZE
	gpm	lpm	psi	bar	rpm	hp		
DBQ-18085A	5.81	22	1500	103	3400	7	10.1	32.5x30.5x24
DBQ-20085A	7.13	27	1200	83	3400	7	10.1	32.5x30.5x24
DBQ-22085A	8.45	32	1000	70	3400	7	10.1	32.5x30.5x24

A5 VERSION

Engine Direct Drive

13HP **HOLLOW SHAFT** **1in** **KEY**
25.4mm 6.35mm



PUMP MODEL	MAX FLOW		MAX PRESSURE		ENGINE POWER		WEIGHT	SHIPPING SIZE
	gpm	lpm	psi	bar	rpm	hp		
DBQ-1807A5	4.76	18	3600	248	3400	13	10.3	32.5x30.5x24
DBQ-2007A5	5.81	22	2900	200	3400	13	10.3	32.5x30.5x24
DBQ-2207A5	7.13	27	2400	166	3400	13	10.3	32.5x30.5x24
DBQ-22085A5	8.45	32	2000	138	3400	13	10.3	32.5x30.5x24

B VERSION

Solid Male Shaft

7.5Kw Max **MALE SHAFT** **24** **KEY**
x 30mm 8.0mm



PUMP MODEL	MAX FLOW		MAX PRESSURE		MOTOR POWER		WEIGHT	SHIPPING SIZE
	gpm	lpm	psi	bar	rpm	kw		
DBQ-1812B	3.43	13	3600	248	1450	7.5	10.0	32.5x30.5x24
DBQ-18138B	3.96	15	3500	245	1450	7.5	10.0	32.5x30.5x24
DBQ-2012B	4.23	16	3300	229	1450	7.5	10.0	32.5x30.5x24
DBQ-20138B	4.97	18.8	2900	200	1450	7.5	10.0	32.5x30.5x24
DBQ-20146B	5.28	20	2700	188	1450	7.5	10.0	32.5x30.5x24
DBQ-22138B	5.81	22	2400	164	1450	7.5	10.0	32.5x30.5x24
DBQ-22146B	6.34	24	2200	155	1450	7.5	10.0	32.5x30.5x24

DBQ Series Commercial High Pressure Triplex Pump

C/2/3 VERSION

Motor Direct Drive

7.5Kw Max **HOLLOW SHAFT** **28** **KEY**
mm 8.0mm



PUMP MODEL	MAX FLOW		MAX PRESSURE		MOTOR POWER		WEIGHT	SHIPPING SIZE
	gpm	lpm	psi	bar	rpm	kw		
DBQ-1812C3	3.43	13	3600	248	1450	7.5	10.8	32.5x30.5x24
DBQ-18138C3	3.96	15	3500	245	1450	7.5	10.8	32.5x30.5x24
DBQ-2012C3	4.23	16	3300	229	1450	7.5	10.8	32.5x30.5x24
DBQ-20138C3	4.97	18.8	2900	200	1450	7.5	10.8	32.5x30.5x24
DBQ-20146C3	5.28	20	2700	188	1450	7.5	10.8	32.5x30.5x24
DBQ-22138C3	5.81	22	2400	164	1450	7.5	10.8	32.5x30.5x24
DBQ-22146C3	6.34	24	2200	155	1450	7.5	10.8	32.5x30.5x24

G1 VERSION

Gearbox, Engine Direct Drive

6.5-7HP **HOLLOW SHAFT** **3/4in** **KEY**
19.05mm 4.78mm



PUMP MODEL	MAX FLOW		MAX PRESSURE		ENGINE POWER		WEIGHT	SHIPPING SIZE
	gpm	lpm	psi	bar	rpm	hp		
DBQ-18146G	4.49	17	1800	124	1560	6.5	12.4	43x41x26
DBQ-20146G	5.55	21	1450	100	1560	6.5	12.4	43x41x26
DBQ-22146G	6.61	25	1200	80	1560	6.5	12.4	43x41x26

G2 VERSION

Gearbox, Engine Direct Drive

13-22HP **HOLLOW SHAFT** **1in** **KEY**
25.4mm 6.35mm



PUMP MODEL	MAX FLOW		MAX PRESSURE		ENGINE POWER		WEIGHT	SHIPPING SIZE
	gpm	lpm	psi	bar	rpm	hp		
DBQ-18146G2	4.49	17	3600	248	3400-1560	13	14.0	43x41x26
DBQ-20146G2	5.55	21	3000	207	3400-1560	13	14.0	43x41x26
DBQ-22146G2	6.61	25	2450	170	3400-1560	13	14.0	43x41x26
	6.61	25	4000	275	3400-1560	22	14.0	43x41x26

S VERSION

Stainless Steel Manifold

7.5Kw Max **MALE SHAFT** **24** **KEY**
x 30mm 8.0mm



PUMP MODEL	MAX FLOW		MAX PRESSURE		MOTOR POWER		WEIGHT	SHIPPING SIZE
	gpm	lpm	psi	bar	rpm	kw		
DBQ-18128S	3.43	13	3600	248	1450	7.5	11.3	32.5x30.5x24
DBQ-18138S	3.96	15	3500	245	1450	7.5	11.3	32.5x30.5x24
DBQ-20128S	4.23	16	3300	229	1450	7.5	11.3	32.5x30.5x24
DBQ-20138S	4.97	18.8	2900	200	1450	7.5	11.3	32.5x30.5x24
DBQ-20146S	5.28	20	2700	188	1450	7.5	11.3	32.5x30.5x24
DBQ-22138S	5.81	22	2400	164	1450	7.5	11.3	32.5x30.5x24
DBQ-22146S	6.34	24	2200	155	1450	7.5	11.3	32.5x30.5x24

DBE Series Commercial High Pressure Triplex Pump

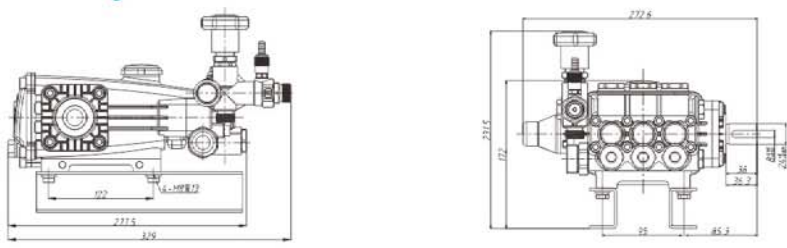
 MANIFOLD Brass forged.	 PLUNGER Solid stainless steel, ceramic coating, precision grinded.	 UNLOADER(#3) Bolt on, external bypass, trap type, built without detergent injector.
 CRANKCASE Die-cast aluminum alloy, anodized.	 PACKING SEALS Germany Parker, U type, Duplex packing.	 CRANKSHAFT Forged steel alloy, heat treatment, multiple process grinded.
 CONNECTING ROD Two pieces aluminum alloy.	 LUBRICATION Splash type, oil type 15W-40, SAE30.	 INLET: 1" BSP, on pump side OUTLET: M22 Male BYPASS: 1/2" Male
 BEARING Dual ball bearing.		

B VERSION Solid Male Shaft **11Kw Max** **MALE SHAFT** 24 x 36mm **KEY** 8.0mm



PUMP MODEL	MAX FLOW		MAX PRESSURE		MOTOR POWER		WEIGHT	SHIPPING SIZE
	gpm	lpm	psi	bar	rpm	kw		
DBE-2218B	9.6	37	2200	150	1800	11	10	36x32x29

B Version Drawing



C3 VERSION Motor Direct Drive **7.5Kw Max** **HOLLOW SHAFT** 28 11mm **KEY** 5.0mm



PUMP MODEL	MAX FLOW		MAX PRESSURE		MOTOR POWER		WEIGHT	SHIPPING SIZE
	gpm	lpm	psi	bar	rpm	kw		
DBE-2218C3	7.9	30	1800	124	1450	7.5	10.7	36x32x29

DBF Series Commercial High Pressure Triplex Pump

 MANIFOLD Brass forged.	 PLUNGER Solid stainless steel, ceramic coating, precision grinded.	 UNLOADER (#4) Recycle For flow less than 35lpm/9.24gpm. IN/OUTLET: 3/8" Female BYPASS: 3/8" Female
 CRANKCASE Die-cast aluminum alloy, anodized.	 PACKING SEALS Germany Parker, U type, Duplex packing.	 UNLOADER (#5) For flow great than 35lpm/9.24gpm. IN/OUTLET: 1/2" Female BYPASS: 1/2" Female
 CONNECTING ROD Two pieces aluminum alloy.	 LUBRICATION Splash type, oil type 15W-40, SAE30.	 UNLOADER (#12) For pressure great than 5000psi/350bar IN/OUTLET: 1/2" Female BYPASS: 1/2" Female
 BEARING Dual needle bearing.		

B VERSION Solid Male Shaft **18.5Kw Max** **MALE SHAFT** 24 x 43.5mm 28 x 45mm **KEY** 8.0mm



PUMP MODEL	MAX FLOW		MAX PRESSURE		MOTOR POWER		WEIGHT	SHIPPING SIZE
	gpm	lpm	psi	bar	rpm	kw		
DBF-1821B	6.1	23.3	5200	360	1450	18.5	14	34.5x30x22
DBF-2221B	9.2	34.7	3500	240	1450	18.5	14	34.5x30x22
DBF-2821B	14.9	56.2	2200	150	1450	18.5	14	34.5x30x22

G2 VERSION Gearbox, Engine Direct Drive **24HP** **HOLLOW SHAFT** 1in 25.4mm **KEY** 6.35mm



PUMP MODEL	MAX FLOW		MAX PRESSURE		ENGINE POWER		WEIGHT	SHIPPING SIZE
	gpm	lpm	psi	bar	rpm	hp		
DBF-1521G2S	4.6	17.4	6800	480	3400-1560	24	20	43x41x26
DBF-1821G2	6.6	25	5000	220	3400-1560	24	18	43x41x26

S VERSION Stainless Steel Manifold **18.5Kw Max** **MALE SHAFT** 24 x 43.5mm 28 x 45mm **KEY** 8.0mm



PUMP MODEL	MAX FLOW		MAX PRESSURE		MOTOR POWER		WEIGHT	SHIPPING SIZE
	gpm	lpm	psi	bar	rpm	kw		
DBF-1521BS	4.3	16.1	6750	465	1450	15	16	34.5x30x22
DBF-1821BS	6.1	23.3	5200	360	1450	18.5	16	34.5x30x22
DBF-2221BS	9.2	34.7	3500	240	1450	18.5	16	34.5x30x22
DBF-2821BS	14.9	56.2	2200	150	1450	18.5	16	34.5x30x22

DAA Series Commercial High Pressure Axial Pump



MANIFOLD
Brass forged, integrated with unloader housing



HOUSING
Die-cast aluminum alloy, anodized.



WOBBLE PLATE
One piece forged cast iron.



BEARING
Dual thrust bearing



PLUNGER
Solid stainless steel, ceramic coating for option.



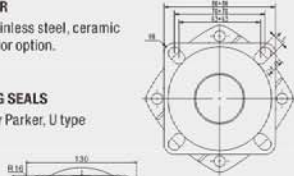
PACKING SEALS
Germany Parker, U type



AC2 Flange
Fit for B34
Frame No. 90



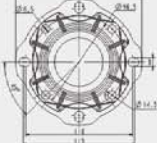
AC5 Flange
Fit for 56C/56HC



AC1 Flange
Fit for B34
Frame No. 80



AC3 Flange
Fit for B34
Frame No. 100/112



A VERSION Engine Direct Drive

6.5-7HP HOLLOW SHAFT 3/4in 19.05mm KEY 4.78mm



PUMP MODEL	MAX FLOW		MAX PRESSURE		ENGINE POWER		WEIGHT	SHIPPING SIZE
	gpm	lpm	psi	bar	rpm	hp		
DAA-15063A	3.0	11.3	2800	193	3400	6.5	4.4	22x21x24
DAA-15054A	2.6	9.2	3000	206	3400	6.5	4.4	22x21x24

AC VERSION Motor Direct Drive

1.5-3Kw HOLLOW SHAFT 24mm 28mm KEY 8.0mm



PUMP MODEL	MAX FLOW		MAX PRESSURE		MOTOR POWER		WEIGHT	SHIPPING SIZE
	gpm	lpm	psi	bar	rpm	kw		
DAA-15054AC2	2.2	8.2	1300	90	2880	1.5	4.7	22x21x24
DAA-15063AC2	2.2	8.2	1900	130	2880	2.2	4.7	22x21x24
DAA-15063AC2	2.5	9.6	1600	110	2880	2.2	4.7	22x21x24
DAA-15063AC2	2.5	9.6	2200	150	2880	3.0	4.7	22x21x24

AC5 VERSION NEMA Motor Direct Drive

NEMA-56C HOLLOWSHAFT 5/8in KEY0.188" 3400 RPM



PUMP MODEL	MAX FLOW		MAX PRESSURE		MOTOR POWER		WEIGHT	SHIPPING SIZE
	gpm	lpm	psi	bar	rpm	hp/kw		
DAA-15042AC5	1.9	7.2	2000	138	3400	2.9/2.1	4.7	22x21x24
DAA-15054AC5	2.5	9.4	2000	138	3400	3.7/2.7	4.7	22x21x24
DAA-15063AC5	2.9	10.9	2000	138	3400	4.2/3.1	4.7	22x21x24

DAC/DAB/DAF Series Hing Consumer and Commercial Axial Pump

A VERSION Engine Direct Drive

5.5-6.5HP HOLLOW SHAFT 3/4in 19.05mm KEY 4.78mm



PUMP MODEL	MAX FLOW		MAX PRESSURE		ENGINE POWER		WEIGHT	SHIPPING SIZE
	gpm	lpm	psi	bar	rpm	hp		
DAF-13062AL	2.2	8.4	2500	172	3400	5.5	3.6	22x21x24
DAF-13069AL	2.5	9.3	2500	172	3400	6.5	3.6	22x21x24

A VERSION Engine Direct Drive

5.5-6.5HP HOLLOW SHAFT 3/4in 19.05mm KEY 4.78mm



PUMP MODEL	MAX FLOW		MAX PRESSURE		ENGINE POWER		WEIGHT	SHIPPING SIZE
	gpm	lpm	psi	bar	rpm	hp		
DAC-13063A	2.2	8.5	2400	166	3400	5.5	4.0	22x21x24
DAC-13071A	2.5	9.6	2600	179	3400	6.5	4.0	22x21x24

V VERSION Vertical Engine Direct Drive

5.5-6.5HP HOLLOW SHAFT 22.23mm KEY 4.78mm 203.2 bolt circle



PUMP MODEL	MAX FLOW		MAX PRESSURE		ENGINE POWER		WEIGHT	SHIPPING SIZE
	gpm	lpm	psi	bar	rpm	hp		
DAC-13063V	2.2	8.5	2400	166	3400	5.5	4.0	22x21x24
DAC-13071V	2.5	9.6	2600	179	3400	6.5	4.0	22x21x24

A VERSION Engine Direct Drive

6.5-7HP HOLLOW SHAFT 3/4in 19.05mm KEY 4.78mm



PUMP MODEL	MAX FLOW		MAX PRESSURE		ENGINE POWER		WEIGHT	SHIPPING SIZE
	gpm	lpm	psi	bar	rpm	hp		
DAD-15063A	3.0	11.2	2700	186	3400	6.5	4.5	22x21x24
DAD-15071A	3.4	12.8	2700	186	3400	7.0	4.5	22x21x24

DAE Series Commercial High Pressure Axial Pump

A VERSION
Engine Direct Drive



6.5-7HP HOLLOW SHAFT 3/4in 19.05mm KEY 4.78mm

PUMP MODEL	MAX FLOW		MAX PRESSURE		ENGINE POWER		WEIGHT	SHIPPING SIZE
	gpm	lpm	psi	bar	rpm	hp		
DAE-18051A	3.5	13.2	2400	166	3400	6.5	5.5	22x21x24
DAE-18065A	6.3	24	1160	80	3400	6.5	5.5	22x21x24

DBK series Commercial Medium Pressure Triplex Pump

<p>MANIFOLD Water inlet/outlet and cylinder separately pieces brass forged Manifold.</p>	<p>UNLOADER Integrated pressure regulator/unloader, external bypass.</p>	<p>OIL GAUGE Bearing cover build with large side oil gauge.</p>
<p>PLUNGER Hollow stainless steel plunger with ceramic coating.</p>	<p>PRESSURE RELIEF SYSTEM Dual cock response automatic pressure relief system.</p>	<p>PACKING SEALS Germany Parker U type water seals.</p>
<p>PLUNGER WATER LUBRICATION Plunger water lubrication/cooling system, grease free</p>	<p>CRANKSHAFT AND BEARING Forged steel alloy crankshaft, enlarged bearing.</p>	<p>CHECKING VALVE High efficiency, high pressure resistance checking valve.</p>

B VERSION
Solid Male Shaft

5.0Kw MALE SHAFT 8" PULLY 24 x.36mm KEY 6.0mm



PUMP MODEL	MAX FLOW		MAX PRESSURE		MOTOR POWER		WEIGHT	SHIPPING SIZE
	gpm	lpm	psi	bar	rpm	kw		
DBK-2828	12.4	47	725	50	900	5	14	43x32x36
DBK-2828	16.3	62	580	37	1200	5	14	43x32x36
DBK-2828	19.6	75	478	30	1450	5	14	43x32x36
DBK-2820	8.7	33	1015	70	900	5	14	43x32x36
DBK-2820	14	50	680	45	1450	5	14	43x32x36

UNLOADER AND VALVES For Commercial High Pressure Triplex Pump



Bolt-on Trap type Internal Bypass Pressure Regulator/Unloader

Code No.	Max Psi/Gpm	Inlet	Outlet	Thread
#1	4000/6.6	3/4" F Swivel Nut	3/8" Female	NH/BSP, NPT/BSP
#9-EZ	4000/6.6	3/4" F Swivel Nut	3/8" Female	NH/BSP, NPT/BSP
#7	4000/6.6	3/4" F Swivel Nut	3/8" OD Socket	NH/BSP, NPT/BSP
#8-EZ	4000/6.6	3/4" F Swivel Nut	3/8" OD Socket	NH/BSP, NPT/BSP

*EZ-Easy Start model features an extra bypass, releases the head build pressure which will against the start when pulling start the engine, help to start even with gun off.



Thread-On Trap type External Bypass Pressure Regulator/Unloader

Code No.	Max Psi/Gpm	Banjo Bolt Size	Outlet	Bypass
#1-EB	4000/6.6	3/8" Male	3/8" OD Socket	1/4" Hose barb
#1-DS	4000/6.6	3/8" Male	3/8" Male	3/8" Male
#3	5000/7.9	3/8" Male	M22 Male	1/2" Male
#3-DS	5000/7.9	3/8" Male	3/8" Male	1/2" Male

*DS-Duplex Stainless Steel forged valve housing, features high resistance of corrosion, use for the pump with duplex stainless steel manifold and sea water reverse osmosis applications.



Thread-On Trap type External Bypass Pressure Regulator/Unloader

Code No.	Max Psi/Gpm	Inlet	Outlet	Bypass
#4	4000/6.6	3/8" Female	3/8" Female	3/8" Female
#E-RC	4000/6.6	3/8" Male	3/8" Female	Connect To Inlet
#5	5000/7.9	1/2" Female	1/2" Female	1/2" Female
#12-SS	10150/21	1/2" Female	1/2" Female	1/2" Female

*RC-Recyle Direct the water from bypass port back into the inlet port with a soft connection hose, and make the pump work as internal bypass mold, features with easy start function.



Pressure Safety Valve

Code No.	Max Pressure	Inlet	Outlet	Bypass
SFV-AD	4000psi/275bar	3/8" Male	N/A	1/4" Hose Barb
SFV-EZ	5000psi/345bar	3/8" Male	N/A	N/A

*AD-Adjustable It is the secondary pressure safety guard if the pressure regulating unloader is failed, it protects the system against over pressurization. The adjustable features setup the relief pressure at different rate.



High Pressure Turning Valve

Code No.	Max Pressure	Inlet	Outlet	Bypass
PTV-1/4	4000psi/275bar	1/4" Male	N/A	1/4" Hose Barb
PTV-3/8	4000psi/275bar	3/8" Male	N/A	1/4" Hose Barb

*PTV-Pressure Turning Valve Install at the pump high pressure area, discharge the air in the pump and water intaking pipe line, enhance the sucking capability, and all to suck the water from a barrel and even pond.